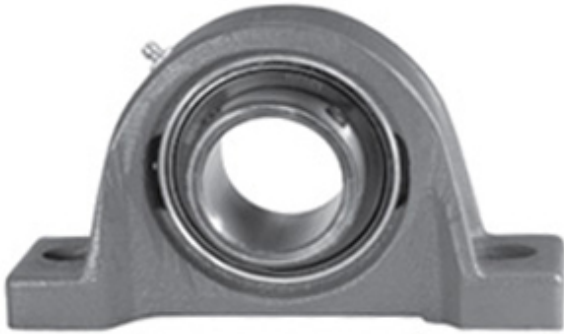




NTN BEARING USA CORP.

0.938 Inch | 23.825 Millimeter x 1.172 Inch |
29.77 Millimeter x 1.313 Inch | 33.35 Millimeter
LINK BELT PL3S215E Pillow Block Bearings



PL3S215E Bearing 2D drawings and 3D CAD models

Bearing No. PL3S215E

Category	Pillow Block Bearings
Inventory	0.0
Manufacturer Name	REXNORD
Minimum Buy Quantity	N/A
Weight	0.82
EAN	0662327421304
Product Group	M06110
Number of Mounting Holes	2
Mounting Method	Set Screw
Housing Style	2 Bolt Pillow Block
Rolling Element	Ball Bearing
Housing Material	Cast Iron
Expansion / Non-expansion	Non-expansion
Mounting Bolts	3/8 Inch
Relubricatable	Yes
Insert Part Number	SG215EL
Seals	Single Lip Contact
Housing Configuration	1 Piece Solid
Inch - Metric	Inch
Other Features	Single Row Intermediate Duty Low Base Extended Inner Race
Long Description	2 Bolt Pillow Block; 15/16" Bore; 1-5/16" Base to Center Height; Set Screw Mount; Ball Bearing; Relubricatable;



NTN BEARING USA CORP.

	Cast Iron; Single Lip Contact; Non-expansion
Category	Pillow Block
UNSPSC	31171511
Harmonized Tariff Code	8483.20.40.40
Noun	Bearing
Keyword String	Pillow Block
Manufacturer URL	http://www.rexnord.com
Manufacturer Item Number	PL3S215E
Manufacturer Internal Number	5842130
Weight / LBS	1.8
D	1.172 Inch 29.77 Millimeter
Bolt Spacing Minimum	0 Inch 0Millimeter
B	1.313 Inch 33.35 Millimeter
Actual Bolt Center to Center	4.1 Inch 105Millimeter
d	0.938 Inch 23.825 Millimeter
Nominal Bolt Center to Center	4.1 Inch 105 Millimeter
Bolt Spacing Maximum	0 Inch 0Millimeter